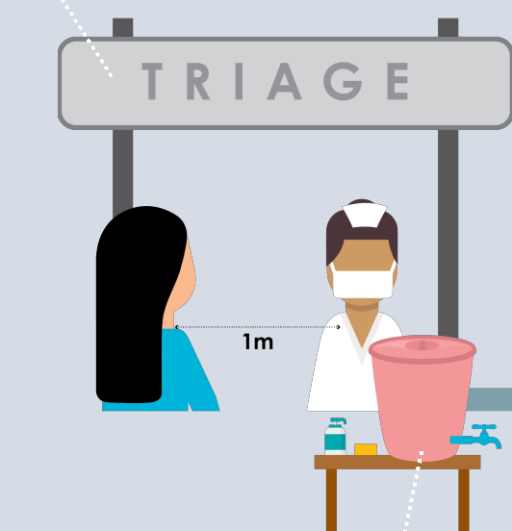


# Novel Coronavirus COVID-19

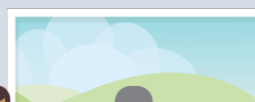
FOR: HEALTHCARE FACILITY MANAGEMENT

## Preparing for COVID-19 at your healthcare facility

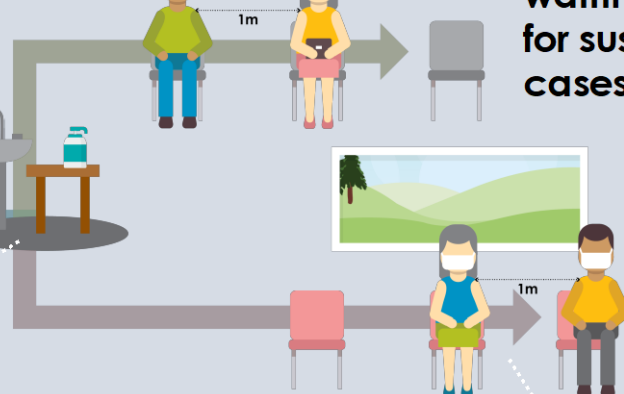
**Have a triage station at the healthcare facility entrance,** prior to any waiting area, to screen patients for COVID-19. This limits potential infection throughout the health care center.



**Post information, like posters and flyers, that remind patients and visitors to practice good respiratory and hand hygiene.**



**Prepare a well-defined and separate waiting area for suspected cases.**



**Have alcohol-based hand rub or soap and water handwashing stations readily available** for the use of healthcare workers, patients and visitors.

**Be alert for anyone that may have symptoms** such as cough, fever, shortness of breath, and difficulty breathing.



### Protect your workforce

**Be ready! Ensure your healthcare and triage workers:**

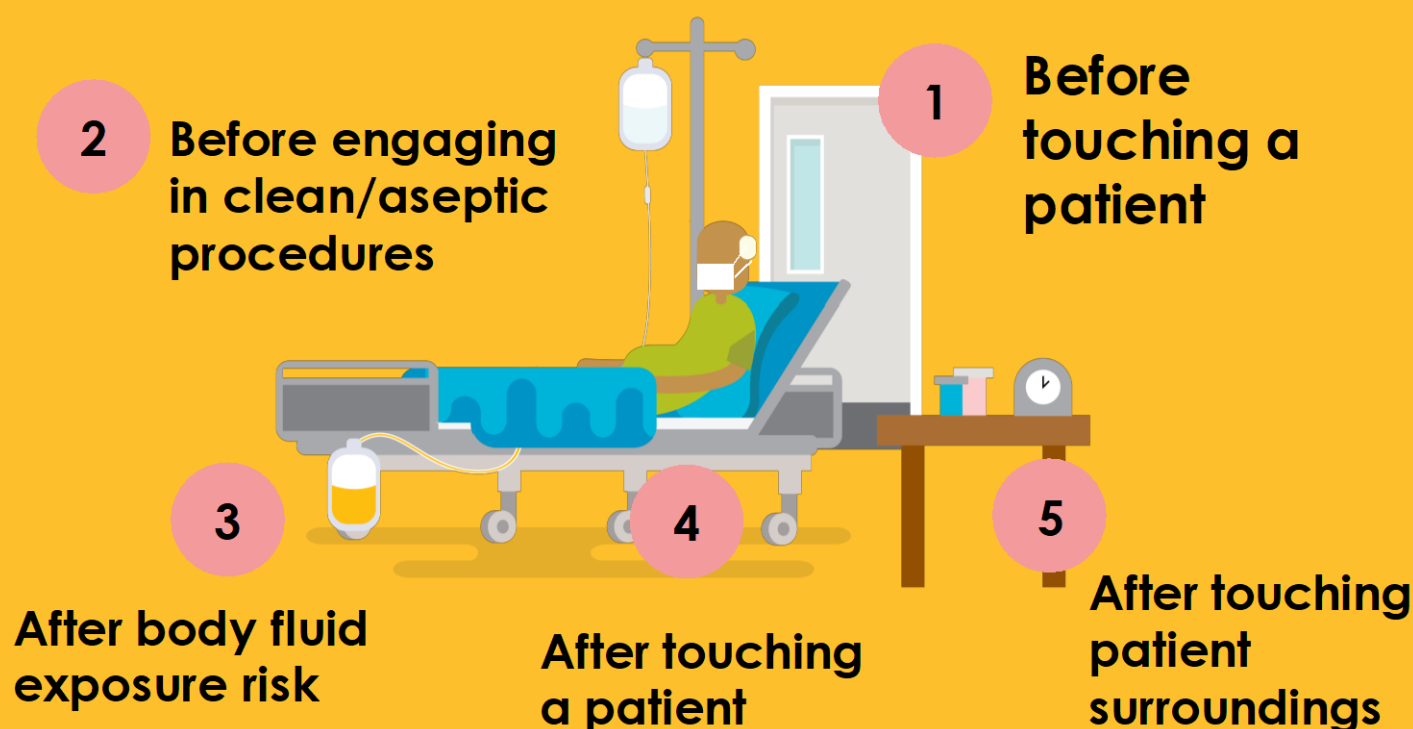
- Are trained on the importance, selection and proper use of personal protective equipment
- Are trained to spot symptoms of a potential COVID-19 infection and offer a medical mask to suspected cases
- Know the case definition and have a decision flow diagram available and accessible for reference at the triage station
- Isolate a suspected case promptly
- Perform hand hygiene frequently





# My 5 Moments for Hand Hygiene

Use alcohol-based hand rub or wash hands with soap and water:



WHOWPRO



WHOWPRO



WHOWPRO



**World Health  
Organization**  
Western Pacific Region

# Novel Coronavirus COVID-19

FOR: HEALTHCARE WORKERS

## Protecting yourself at work from COVID-19



Follow the guidance of your healthcare facility management and talk to your colleagues about agreed COVID-19 safety procedures



When entering a room with a suspected or confirmed COVID-19 patient, put on:

- disposable gloves
- a clean, long-sleeve gown
- medical mask that covers your mouth and nose
- eye protection such as goggles



### Remember

Personal protective equipment should be changed between use and for each different patient. If utilizing single-use personal protective equipment (e.g. single-use masks, gloves, face shields) dispose in a waste bin with a lid and wash your hands thoroughly. Anything single-use cannot be reused or sterilized!



If performing an aerosol-generating procedure, such as intubation, use a particulate respirator such as an N95 – **do a seal check!**



Boots and coverall suits **are not required**

### Remember

Don't touch your eyes, nose or mouth with gloves or bare hands until proper hand hygiene has been performed



If you start coughing, sneezing or develop fever after you have provided care, report your illness immediately to the concerned authority and follow their advice



### My 5 Moments for Hand Hygiene

Use alcohol-based hand rub or wash hands with soap and water:

1. Before touching a patient
2. Before engaging in clean/aseptic procedures
3. After body fluid exposure risk
4. After touching a patient
5. After touching patient surroundings



# Novel Coronavirus COVID-19

FOR HEALTHCARE WORKERS

## Personal Protective Equipment (PPE) According to Healthcare Activities

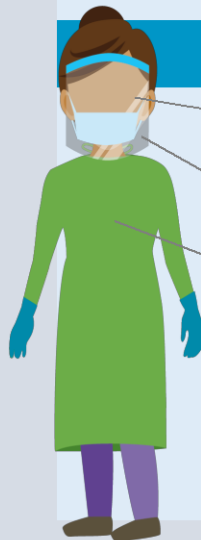
**Remember** Hand hygiene is always important. Clean hands before putting on, and after taking off, PPE.

### Triage/points of entry screening personnel



medical  
mask

### Collecting respiratory specimens



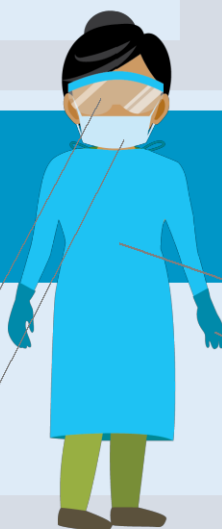
goggles OR face shield

medical mask

gown

gloves

### Caring for a suspected/confirmed case of COVID-19 with NO aerosol-generating procedure



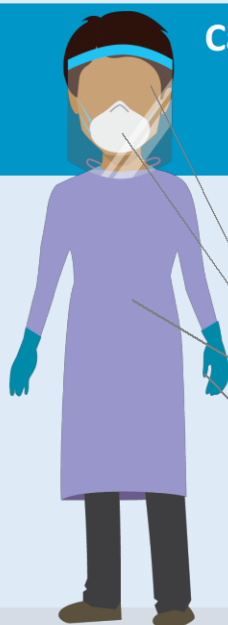
goggles OR face shield

medical mask

gown

gloves

### Caring for a suspected/confirmed case of COVID-19 WITH aerosol-generating procedure



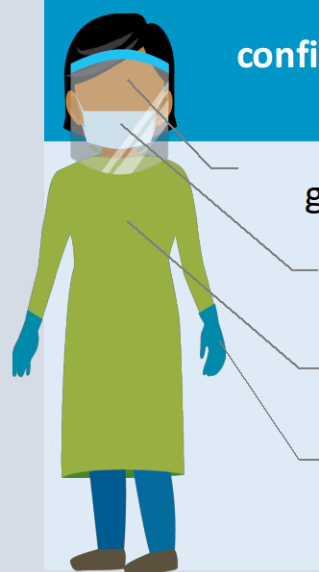
goggles OR face shield

Respirator (N95 or FFP2)

gown

gloves

### Transport of suspected/ confirmed case of COVID-19, including direct care



goggles OR face shield

medical mask

gown

gloves



WHOWPRO



WHOWPRO



WHOWPRO



World Health  
Organization  
Western Pacific Region